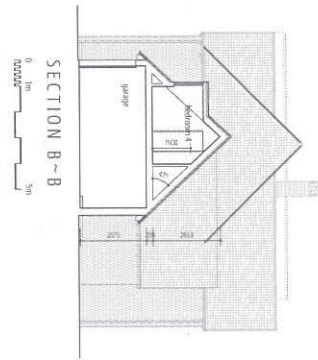
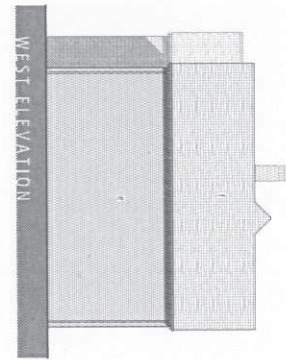
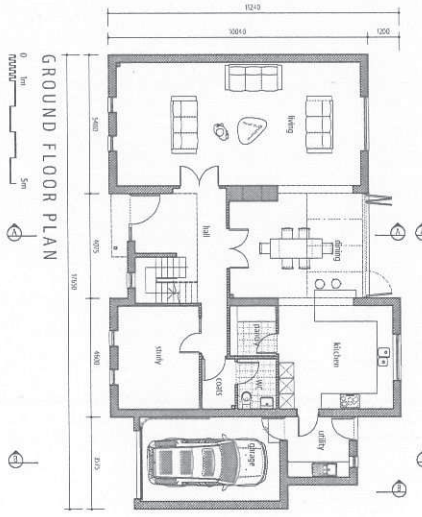
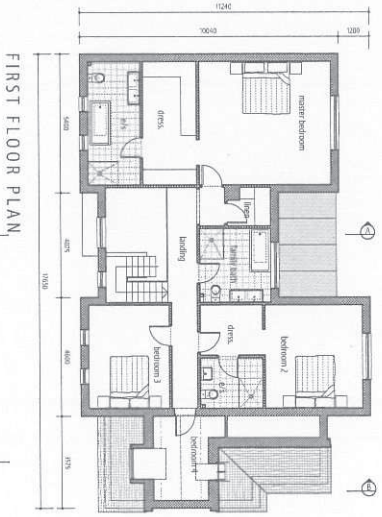
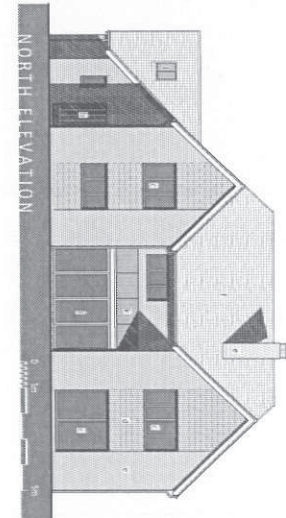
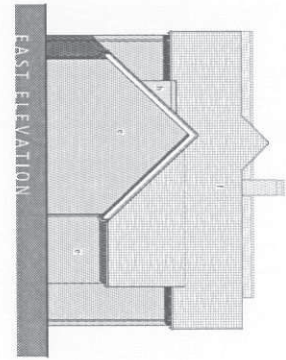
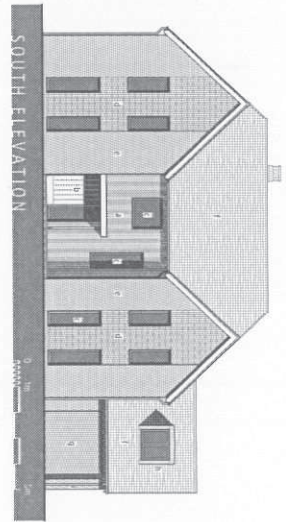


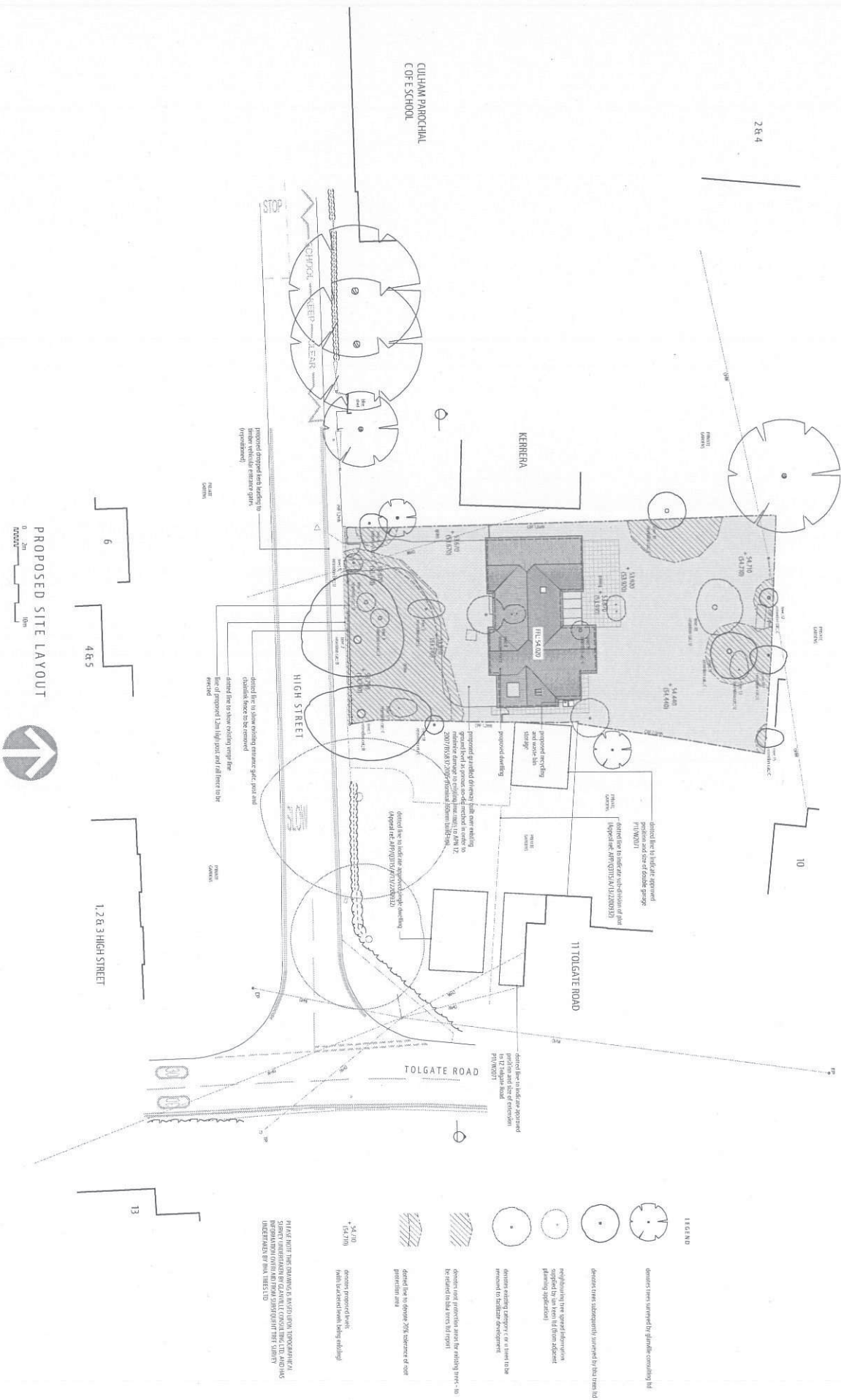
Agenda Item 8



- KEY TO MATERIALS
- 1. vertical board and batten with horizontal metal bands
 - 2. solid core door
 - 3. powder coated aluminium/steel composite window
 - 4. aluminium window frame
 - 5. dark brown solid wood staircase detailing
 - 6. floor tile
 - 7. floor tile
 - 8. vertical board and batten
 - 9. vertical board and batten
 - 10. powder coated aluminium/steel composite window
 - 11. aluminium window frame
 - 12. aluminium window frame
 - 13. aluminium window frame
 - 14. aluminium window frame
 - 15. aluminium window frame
 - 16. aluminium window frame
 - 17. aluminium window frame
 - 18. aluminium window frame
 - 19. aluminium window frame
 - 20. aluminium window frame
 - 21. aluminium window frame
 - 22. aluminium window frame
 - 23. aluminium window frame
 - 24. aluminium window frame
 - 25. aluminium window frame
 - 26. aluminium window frame
 - 27. aluminium window frame
 - 28. aluminium window frame
 - 29. aluminium window frame
 - 30. aluminium window frame
 - 31. aluminium window frame
 - 32. aluminium window frame
 - 33. aluminium window frame
 - 34. aluminium window frame
 - 35. aluminium window frame
 - 36. aluminium window frame
 - 37. aluminium window frame
 - 38. aluminium window frame
 - 39. aluminium window frame
 - 40. aluminium window frame
 - 41. aluminium window frame
 - 42. aluminium window frame
 - 43. aluminium window frame
 - 44. aluminium window frame
 - 45. aluminium window frame
 - 46. aluminium window frame
 - 47. aluminium window frame
 - 48. aluminium window frame
 - 49. aluminium window frame
 - 50. aluminium window frame
 - 51. aluminium window frame
 - 52. aluminium window frame
 - 53. aluminium window frame
 - 54. aluminium window frame
 - 55. aluminium window frame
 - 56. aluminium window frame
 - 57. aluminium window frame
 - 58. aluminium window frame
 - 59. aluminium window frame
 - 60. aluminium window frame
 - 61. aluminium window frame
 - 62. aluminium window frame
 - 63. aluminium window frame
 - 64. aluminium window frame
 - 65. aluminium window frame
 - 66. aluminium window frame
 - 67. aluminium window frame
 - 68. aluminium window frame
 - 69. aluminium window frame
 - 70. aluminium window frame
 - 71. aluminium window frame
 - 72. aluminium window frame
 - 73. aluminium window frame
 - 74. aluminium window frame
 - 75. aluminium window frame
 - 76. aluminium window frame
 - 77. aluminium window frame
 - 78. aluminium window frame
 - 79. aluminium window frame
 - 80. aluminium window frame
 - 81. aluminium window frame
 - 82. aluminium window frame
 - 83. aluminium window frame
 - 84. aluminium window frame
 - 85. aluminium window frame
 - 86. aluminium window frame
 - 87. aluminium window frame
 - 88. aluminium window frame
 - 89. aluminium window frame
 - 90. aluminium window frame
 - 91. aluminium window frame
 - 92. aluminium window frame
 - 93. aluminium window frame
 - 94. aluminium window frame
 - 95. aluminium window frame
 - 96. aluminium window frame
 - 97. aluminium window frame
 - 98. aluminium window frame
 - 99. aluminium window frame
 - 100. aluminium window frame

PROPOSED PLANS ELEVATIONS & SECTIONS
 PINK & SMITH
 PROPOSED DWELLING
 LAND ADJ. KERBERA, HIGH STREET, GUILFAM
 05/02/14
 1:00 @ A1
 155-P2
 A

Agenda Item 8



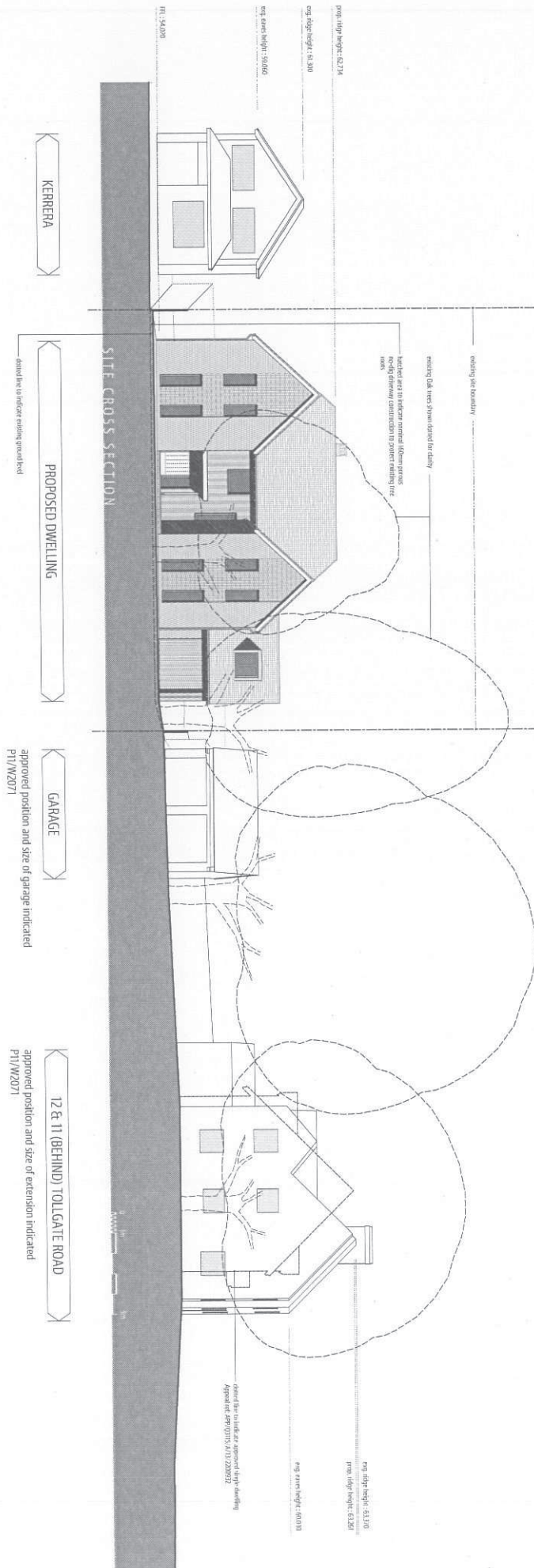
PROPOSED DWELLING, LAND ADJACENT TO KERRERA, HIGH STREET, CULHAM
 PROPOSED SITE LAYOUT

DATE: 05/02/14
 SCALE: 1:200 @ A1
 DRAWING NO: 155-P1

PREPARED BY: PINK & SMITH
 CHECKED BY: PINK & SMITH
 APPROVED BY: PINK & SMITH

AG ARCHITECTS LTD

Agenda Item 8



1. The proposed site plan and site section are subject to the following conditions:
 a. The proposed site plan and site section are subject to the following conditions:
 b. The proposed site plan and site section are subject to the following conditions:
 c. The proposed site plan and site section are subject to the following conditions:

A. The proposed site plan and site section are subject to the following conditions:
 1. The proposed site plan and site section are subject to the following conditions:
 2. The proposed site plan and site section are subject to the following conditions:
 3. The proposed site plan and site section are subject to the following conditions:

PROPOSED DWELLING
 12 & 11 (BEHIND) TOLLGATE ROAD
 PROPOSED SITE SECTION

155-P3

A

